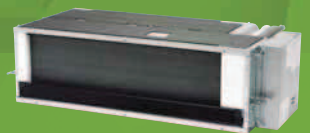
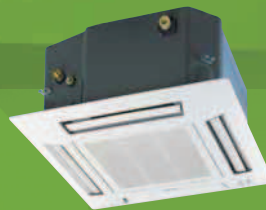


# Panasonic

NOE-G • POWERFUL • QUIET • nanoe-G ECONAVI

NEW DOMESTIC  
RANGE  
MORE EFFICIENCY  
MORE SAVINGS

2014 - 2015



NEW DOMESTIC AIR TO AIR HEAT PUMP 2014 - 2015

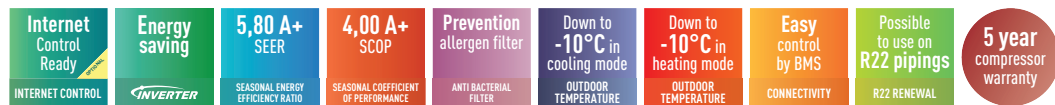
## 4 WAY 60x60 CASSETTE INVERTER

Specially designed for offices, retail and restaurant applications, this cassette fits perfectly into 60x60 or 70x70 ceiling grids.

Featuring the best efficiency in its category (heating and cooling up to -10°C, this new cassette in 9 and 12 kW versions can also be connected to KNX, Modbus, EnOcean interfaces for easy integration with your BMS systems. Interfaces have dry contacts (ON/OFF, error message) to enable easy integration.

With the new Intesishome interface, you can also control the cassette from your smartphone and internet very easily!

Fit Panasonic's Cassette Type, and start to save all year round!



INTERNET CONTROL READY: Optional. SEER and SCOP: For KIT-E9-PB4EA. ANTI BACTERIAL FILTER: Optional.

KIT			KIT-E9-PB4EA			KIT-E12-PB4EA		
<b>Indoor</b>			<b>CS-E9PB4EA</b>			<b>CS-E12PB4EA</b>		
<b>Outdoor</b>			<b>CU-E9PB4EA</b>			<b>CU-E12PB4EA</b>		
<b>Panel</b>			<b>CZ-BT20E</b>			<b>CZ-BT20E</b>		
Cooling capacity	Nominal (Min - Max)	kW	2,50 (0,85 - 3,00)			3,40 (0,85 - 4,00)		
	Nominal (Min - Max)	kCal/h	2.150 (731 - 2.780)			2.920 (730 - 3.440)		
<b>SEER</b>		<b>W/W</b>	<b>5,80 A+</b>			<b>5,60 A+</b>		
Pdesign (cooling)		kW	2,50			3,40		
Power input cooling	Nominal	kW	0,550 (0,240 - 0,740)			0,890 (0,240 - 1,200)		
Annual electricity consumption (cooling) <sup>1)</sup>		kWh/a	151			213		
Heating capacity	Nominal (Min - Max)	kW	3,20 (0,85 - 4,80)			4,50 (0,85 - 5,60)		
	Nominal (Min - Max)	kCal/h	2.752 (731 - 4.130)			3.870 (730 - 4.820)		
Heating capacity at -7°C	Nominal	kW	2,60			3,00		
<b>SCOP</b>		<b>Energy Saving</b>	<b>4,00 A+</b>			<b>3,80 A+</b>		
Pdesign at -10°C		kW	2,70			3,00		
Power input heating	Nominal	kW	0,800 (0,230 - 1,350)			1,420 (0,230 - 2,000)		
Annual electricity consumption (heating) <sup>1)</sup>		kWh/a	945			1.105		
<b>Indoor Unit</b>								
Power source		V	230			230		
Recommended fuse		A	16			16		
Recommended power cable section		mm <sup>2</sup>	1,5			1,5		
Connection		mm <sup>2</sup>	4 x 1,5 to 2,5			4 x 1,5 to 2,5		
Current (Nominal)	Cooling / Heating	A	2,65 / 3,85			4,2 / 6,5		
Air volume	Cooling / Heating	m <sup>3</sup> /h	630 / 648			630 / 648		
Moisture removal volume		l/h	1,5			2,3		
Sound pressure level <sup>2)</sup>	Cooling (Hi / Lo / S-Lo)	dB(A)	34 / 26 / 23			34 / 26 / 23		
	Heating (Hi / Lo / S-Lo)	dB(A)	35 / 28 / 25			35 / 28 / 25		
Sound power level	Cooling (Hi)	dB	50			50		
	Heating (Hi)	dB	51			51		
Dimensions (H x W x D)	Indoor	mm	260 x 575 x 575			260 x 575 x 575		
	Panel	mm	51 x 700 x 700			51 x 700 x 700		
Net weight	Indoor / Panel	kg	18 / 2,5			18 / 2,5		
Dust filter			Yes			Yes		
Antiallergic filter	Optional		CZ-SA22P			CZ-SA22P		
<b>Outdoor Unit</b>								
Power source		V	230			230		
Air volume	Cooling / Heating	m <sup>3</sup> /h	1.830 / 1.734			1.980 / 1.836		
Sound pressure level <sup>2)</sup>	Cooling / Heating (Hi)	dB(A)	45 / 46			45 / 47		
Sound power level	Cooling / Heating (Hi)	dB	58 / 61			60 / 62		
Dimensions <sup>3)</sup>	H x W x D	mm	622 x 824 x 299			695 x 875 x 320		
Net weight		kg	36			45		
Piping connections	Liquid / Gas pipe	Inch (mm)	1/4 (6,35) / 3/8 (9,52)			1/4 (6,35) / 3/8 (9,52)		
Refrigerant loading	R410A	kg	1,13			1,13		
Elevation difference (in/out)	Max	m	15			15		
Piping length	Min / Max	m	3 / 20			3 / 20		
Precharge length	Max	m	10			10		
Additional charge		g/m	20			20		
Operating range	Cooling (Min / Max)	°C	-10 / +43			-10 / +43		
	Heating (Min / Max)	°C	-10 / +24			-10 / +24		

Rating Conditions: Cooling Indoor 27°C DB / 19°C WB. Cooling Outdoor 35°C DB / 24°C WB. Heating Indoor 20°C DB. Heating Outdoor 7°C DB / 6°C WB. (DB: Dry Bulb; WB: Wet Bulb)

1) The annual energy consumption is calculated in accordance with the ErP directive. 2) The Sound pressure level of the units shows the value measured of a position 1 metre in front of the main body and 1,5 m below the ceiling in the centre of the unit. The sound pressure is measured in accordance with Eurovent 6/C/006-97 specification. 3) Add 70 mm for piping port.

Specifications subject to change without notice.

For detailed information about ErP, please visit our page <http://www.ptc.panasonic.eu>



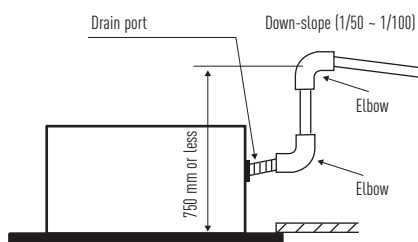
## KIT-E9-PB4EA // KIT-E12-PB4EA

### Technical focus

- **NEW!** 9 and 12kW Cassettes can be controlled by Intesishome, KNX, EnOcean and Modbus
- **New!** This units can be installed on R22 pipings
- Designed for easy installation in the standard European 60x60 ceiling grid
- Operation down to -10°C in cooling and heating modes
- Piping length up to 30 m
- Maximum elevation difference up to 20 m
- Ultra compact outdoor units for easy installation
- Real time clock with single ON&OFF timer
- High pressure selector in case of high ceilings (higher than 2,7m)
- Drain pump included (max 750mm high)
- Air fresh entry available on the cassette

### INDOOR UNIT DRAIN PIPING

The height of drain may be possible up to 750 mm.



### Features

#### HEALTHY AIR

- CZ-SA22P Anti Bacterial Filter (optional)
- Odour-removing function

#### ENERGY, EFFICIENCY AND ECOLOGY

- Maximum efficiency Inverter system

#### COMFORT

- Super Quiet
- Powerful mode
- Automatic vertical airflow control ambient temperature
- Hot start mode
- Real time clock with single ON&OFF timer
- Automatic restart after power cut

#### EASE OF USE

- Ergonomic infrared remote control

#### EASY INSTALLATION AND MAINTENANCE

- Removable, washable panel of the indoor unit
- Top panel maintenance access for the outdoor unit



CU-E9PB4EA



CU-E12PB4EA